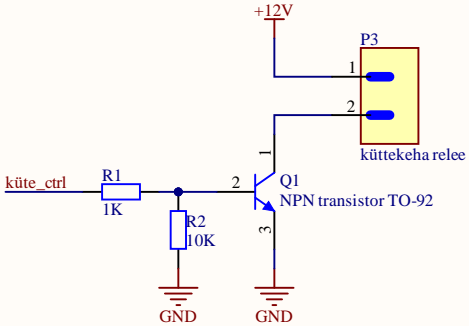


Teeme NPN transistoriga kütte juhtimise 12V-st. Pesa jääb alles. näiteks BC847 ja through hole-iga.

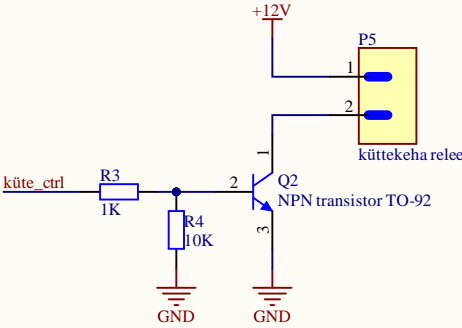
kui tahad juhiseid lisaks küsi, esialgu kirjutasin siia lakooniliselt



| Title | | |
|-------|-------------------------------|-----------|
| Size | Number | Revision |
| A4 | | |
| Date: | 5.18.2022 | Sheet of |
| File: | C:\Users\...\kyttekeha.SchDoc | Drawn By: |

Teeme NPN transistoriga kütte juhtimise 12V-st. Pesa jääb alles. näiteks BC847 ja through hole-iga.

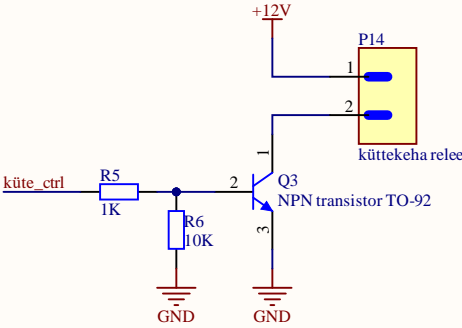
kui tahad juhiseid lisaks küsi, esialgu kirjutasin siia lakooniliselt



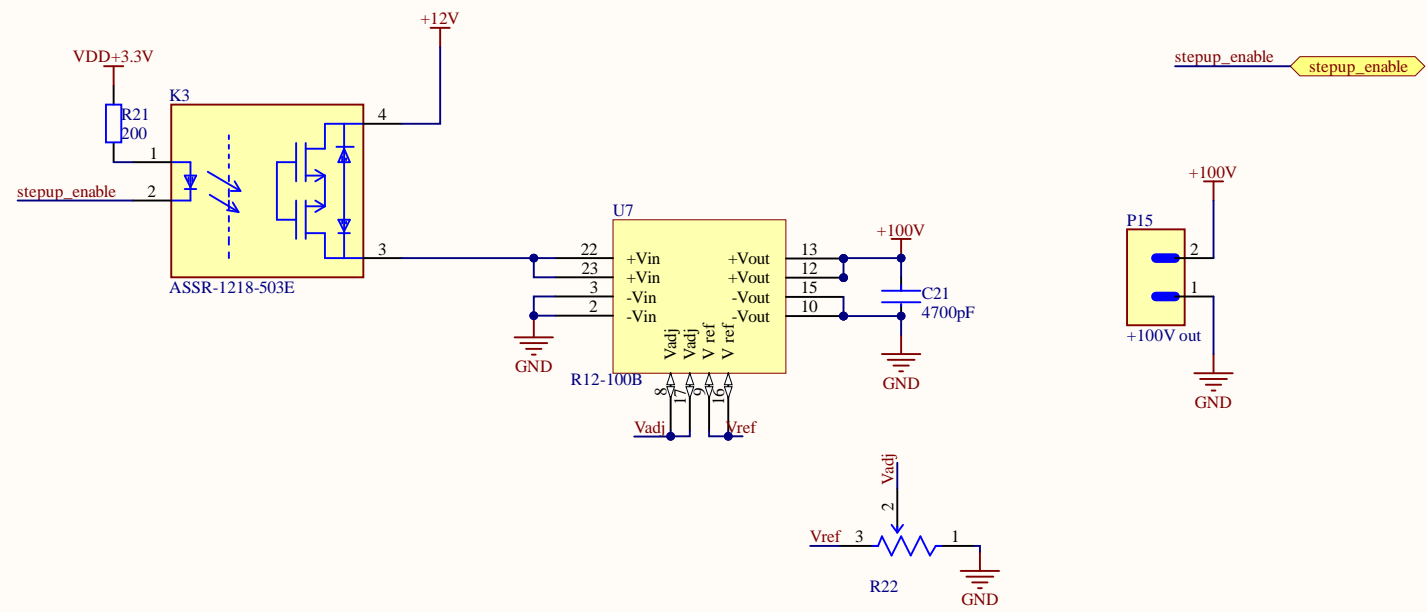
| Title | | |
|-------|-------------------------------|-----------|
| Size | Number | Revision |
| A4 | | |
| Date: | 5.18.2022 | Sheet of |
| File: | C:\Users\...\kyttekeha.SchDoc | Drawn By: |

Teeme NPN transistoriga kütte juhtimise 12V-st. Pesa jääb alles. näiteks BC847 ja through hole-iga.

kui tahad juhiseid lisaks küsi, esialgu kirjutasin siia lakooniliselt



| Title | | |
|-------|-------------------------------|-----------|
| Size | Number | Revision |
| A4 | | |
| Date: | 5.18.2022 | Sheet of |
| File: | C:\Users\...\kyttekeha.SchDoc | Drawn By: |



| Title | | |
|-------|--------------------------------|-----------|
| Size | Number | Revision |
| A4 | | |
| Date: | 5.18.2022 | Sheet of |
| File: | C:\Users\...\lisafilter.SchDoc | Drawn By: |

A

A

B

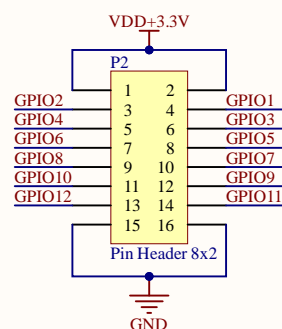
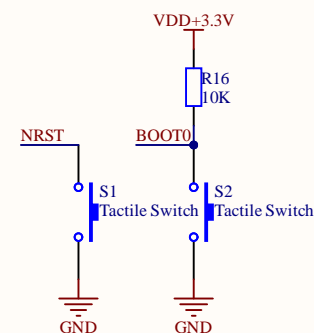
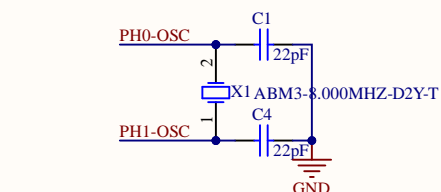
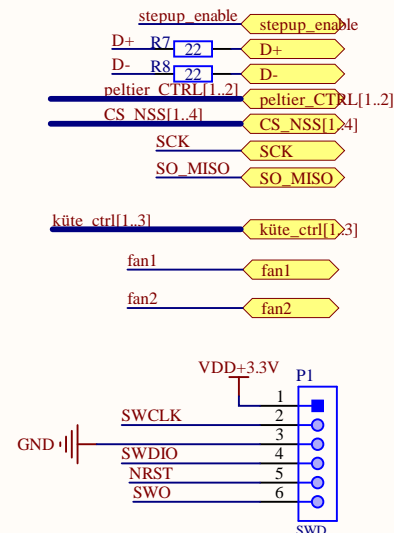
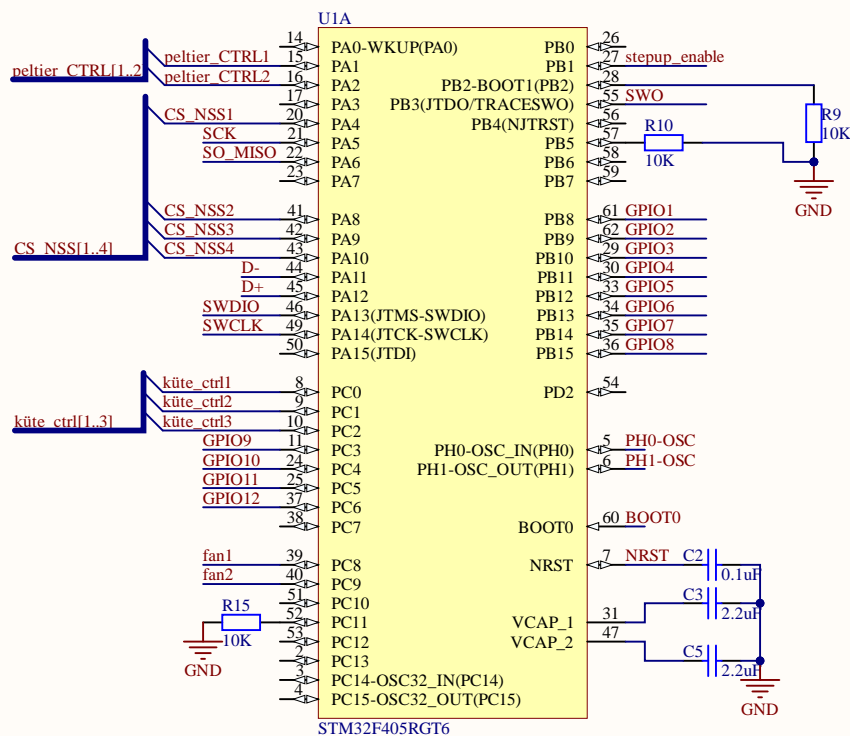
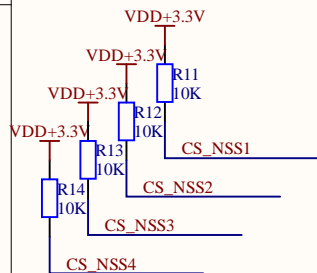
B

C

C

D

D



| Title | | |
|-------|-------------------------|-----------|
| Size | Number | Revision |
| A4 | | |
| Date: | 5.18.2022 | Sheet of |
| File: | C:\Users\...\MCU.SchDoc | Drawn By: |

1

2

3

4

A

A

B

B

C

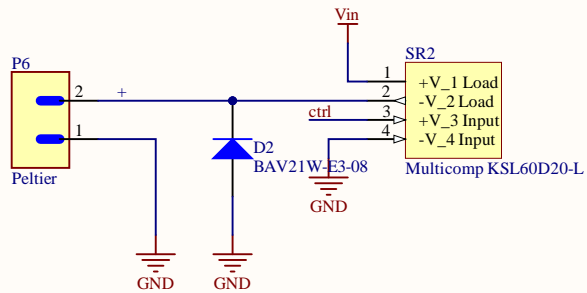
C

D

D

▲ Jämedad
juhtmed,
laiad liinid ja
siin
kruviterminal

▲ Peltierile eraldi
toiteplokk, ehk
siis
kruviterminal ka
Vinut (1)



ctrl peltier_CTRL

| Title | | |
|-------|-----------------------------|-----------|
| Size | Number | Revision |
| A4 | | |
| Date: | 5.18.2022 | Sheet of |
| File: | C:\Users\...\Peltier.SchDoc | Drawn By: |

1

2

3

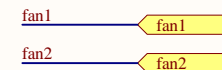
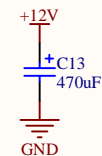
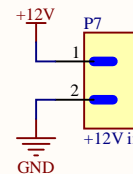
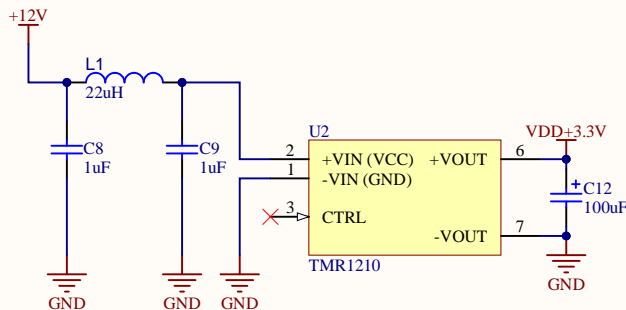
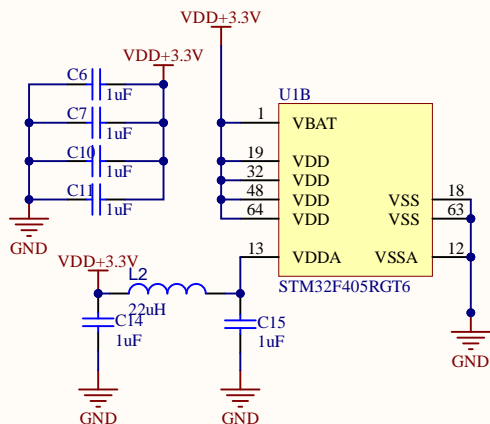
4

1

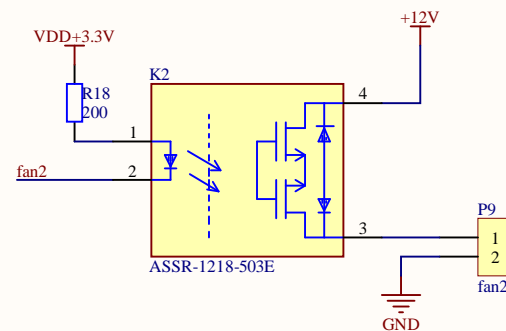
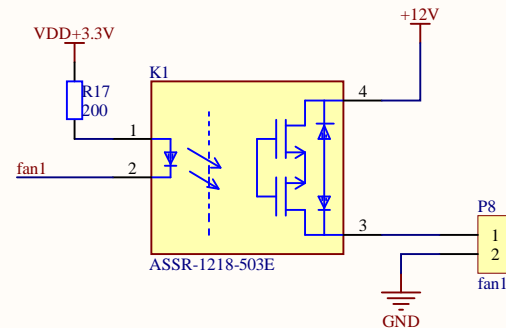
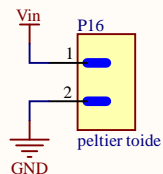
2

3

4



△ Vaata üle takistite
väärtused, kas võeti arvesse
sellise pinget/takistuse
suhtega



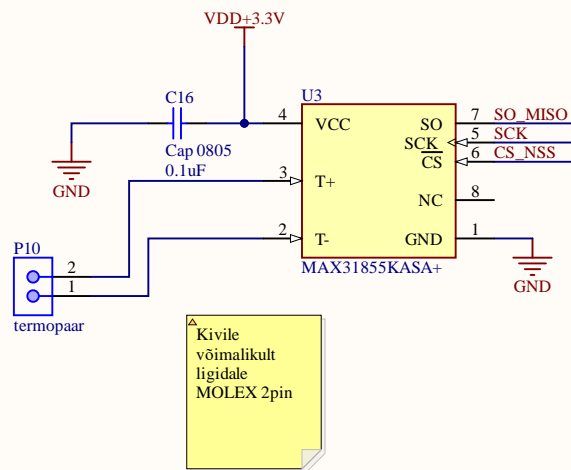
| Title | | |
|-------|---------------------------|-----------|
| Size | Number | Revision |
| A4 | | |
| Date: | 5.18.2022 | Sheet of |
| File: | C:\Users\...\power.SchDoc | Drawn By: |

1

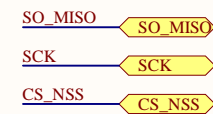
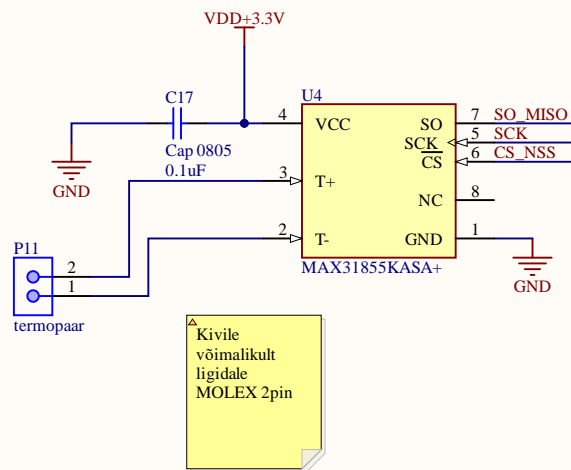
2

3

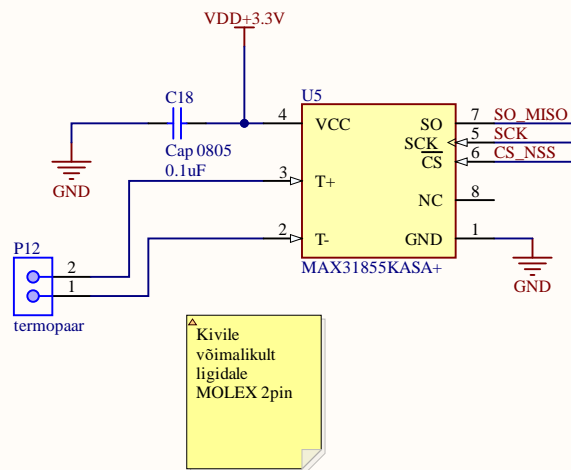
4



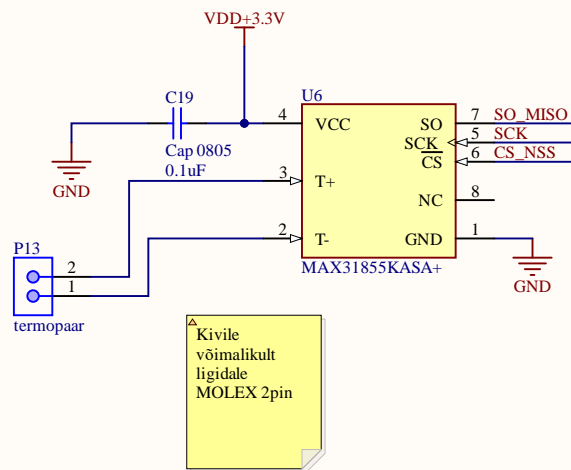
| | | |
|-------------------------------------|-----------|----------|
| Title | | |
| Size A4 | Number | Revision |
| Date: 5.18.2022 | Sheet of | |
| File: C:\Users\...\termopaar.SchDoc | Drawn By: | |



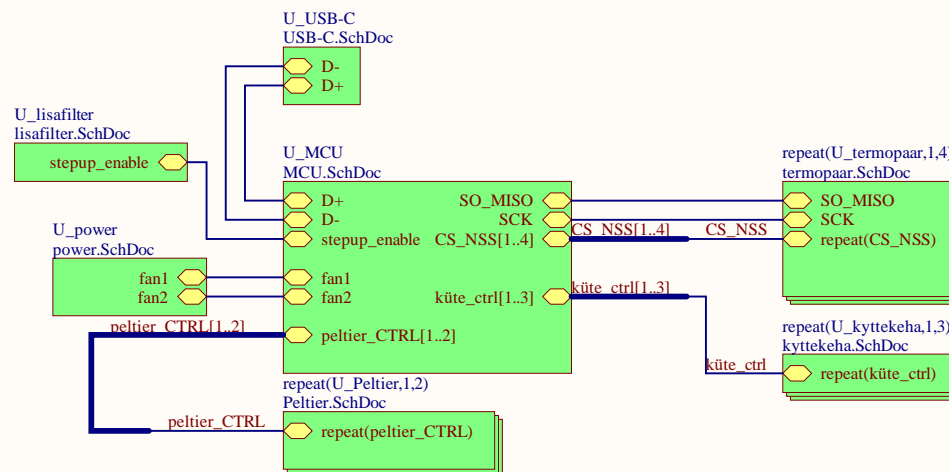
| | | |
|-------------------------------------|-----------|----------|
| Title | | |
| Size A4 | Number | Revision |
| Date: 5.18.2022 | Sheet of | |
| File: C:\Users\...\termopaar.SchDoc | Drawn By: | |



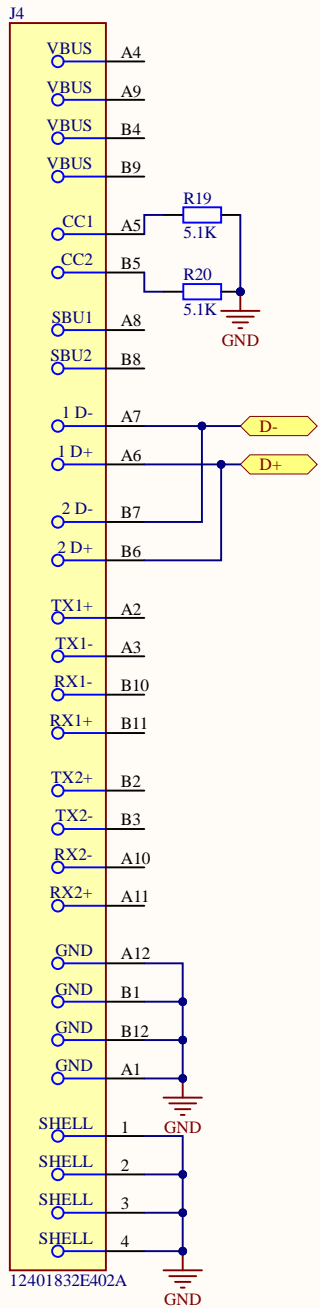
| Title | | |
|-------------------------------------|-----------|----------|
| Size A4 | Number | Revision |
| Date: 5.18.2022 | Sheet of | |
| File: C:\Users\...\termopaar.SchDoc | Drawn By: | |



| Title | | |
|-------------------------------------|-----------|----------|
| Size A4 | Number | Revision |
| Date: 5.18.2022 | Sheet of | |
| File: C:\Users\...\termopaar.SchDoc | Drawn By: | |



| Title | | |
|-------|-------------------------------|-----------|
| Size | Number | Revision |
| A4 | | |
| Date: | 5.18.2022 | Sheet of |
| File: | C:\Users\...\top_sheet.SchDoc | Drawn By: |



| Title | | |
|-------|---------------------------|-----------|
| Size | Number | Revision |
| A4 | | |
| Date: | 5.18.2022 | Sheet of |
| File: | C:\Users\...\USB-C.SchDoc | Drawn By: |

